

## CHAPTER 2

### PROBLEMS WITH EXPLICIT SOLUTIONS

The formulation of Stefan Problems as models of basic phase-change processes was presented in §1.2. Under certain restrictions on the parameters and data such problems admit **explicit solutions in closed form**. These simplest possible, explicitly solvable Stefan problems form the backbone of our understanding of all phase-change models and serve as the only means of validating approximate and numerical solutions of more complicated problems.

Unfortunately, closed-form explicit solutions (all of which are of similarity type) may be found only under the following very restrictive conditions: 1-dimensional, semi-infinite geometry, uniform initial temperature, constant imposed temperature (at the boundary), and thermophysical properties constant in each phase.

Within these confines we present a succession of models of increasingly complicated phase-change processes.

We begin with the simplest possible models, the classical 1-phase Stefan problem ( §2.1), and 2-phase Stefan Problem ( §2.2), modeling the most basic aspects of a phase-change process (as discussed in §1.2). We present the Neumann similarity solution and familiarize the reader with some of the information it conveys.

Next ( §2.3 ) we relax the assumption of constant density by allowing the densities of solid and liquid to be different (but each still a constant), thus bringing density change effects into the picture. We study the effect of volume expansion (no voids), and of shrinkage (causing formation of a void near the wall). In each case we formulate explicitly solvable thermal models (neglecting all mechanical effects) and examine the effect of density change on the Neumann solution. More precise models, which include mechanical effects but don't admit explicit solutions, are derived from first principles in the last subsection.

In §2.4 we introduce supercooling, thus relaxing the assumption that the phase-change occurs at the melt temperature  $T_m$ . We discuss the thermodynamics of phase-coexistence and derive the Laplace-Young, Clausius-Clapeyron and Gibbs-Thomson relations from first principles. The classical Mullins-Sekerka morphological stability analysis is also presented.

In §2.5 we discuss binary alloy solidification, coupling heat conduction and solute diffusion. We present the classical model of Rubinstein and its explicit solution, as well as various other models of freezing over an extended temperature range.

The introduction of each new physical phenomenon in the simplest possible setting (dictated by the desire to have explicit solutions available) helps us understand the phenomenon more easily and see its effects on the solution.

Similarity solutions in cylindrical and spherical geometries for special problems are the subject of §2.6. Finally, in §2.7 we present a contrived (artificial) multi-dimensional phase-change problem whose explicit solution may serve as benchmark for 2 or 3 dimensional numerical codes. Such a debugging tool becomes necessary because **no** explicitly solvable phase-change problem exists in 2 or 3 dimensions.

Each phase-change process involving *melting* has a counterpart involving *freezing*. For consistency throughout our discussions we will be treating the case of *melting*, unless we are specifically interested in a solidification process (as in §2.5). The parallel developments for freezing will be mostly left as exercises for the reader in the PROBLEMS, but the changes needed to turn the solution of the one to the other will be indicated in the text.

## 2.1. THE ONE-PHASE STEFAN PROBLEM

### 2.1.A Introduction

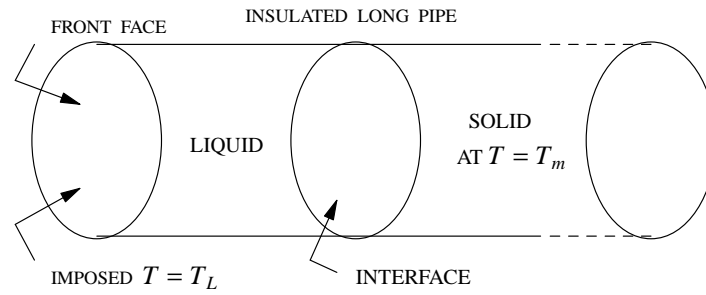
The simplest explicitly solvable phase-change problem is the 1-phase Stefan Problem (§1.2.F) with **constant** imposed temperature and constant thermophysical properties. Its solution is the classical Neumann similarity solution [CARSLAW-JAEGER], [RUBINSTEIN] involving the error function. As prototype example we treat the **melting** problem leaving the case of freezing for the reader to examine via the Problems.

The term “one-phase” refers to only one of the phases (liquid) being “active”, the other phase staying at the melt temperature  $T_m$  (§1.2.F). Thus the physical situation is the following:

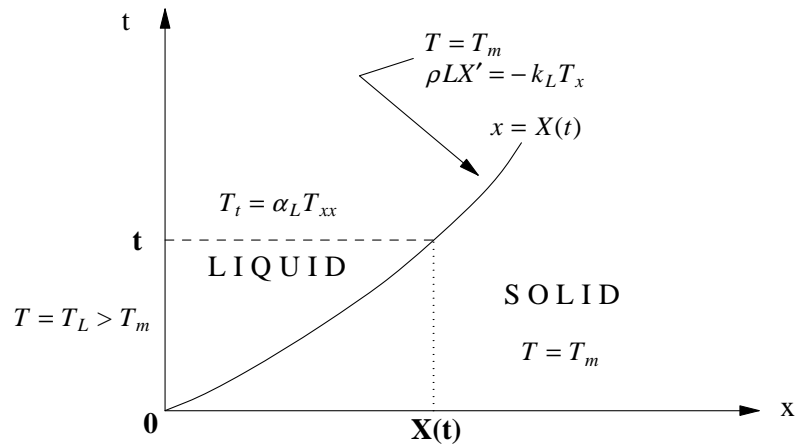
**PHYSICAL PROBLEM:** Melting of a (semi-infinite) slab,  $0 \leq x < \infty$ , initially **solid** at the melt temperature,  $T_m$ , by imposing a **constant** temperature  $T_L > T_m$  on the face  $x = 0$ . Thermophysical parameters:  $\rho$ ,  $c_L$ ,  $k_L$ ,  $L$ ,  $\alpha_L = k_L / \rho c_L$ , all constant.

The physical realization of this problem is an insulated pipe, filled with a PCM, and exposed at one face to a heat source, while its length is so great that the second face is not reached by the melting front during the life of the experiment (**Figure 2.1.1**). The experiment begins with the material initially solid and at its melt temperature. The nearby face temperature is raised as quickly as possible to the value  $T_L$  and maintained at that value for all time. This may be done by pumping a heat exchange fluid at temperature  $T_L$  at very high mass flow rate across the face. The mathematical model of this process leads, as in §1.2, to the following:

**MATHEMATICAL PROBLEM** (1-phase Stefan Problem for a slab melting from the left):



**Figure 2.1.1.** Physical realization of the One-Phase Stefan Problem.



**Figure 2.1.2.** Space-time diagram for the One-Phase Stefan Problem.

Find  $T(x, t)$  and  $X(t)$  such that (**Figure 2.1.2**)

$$T_t = \alpha_L T_{xx}, \quad 0 < x < X(t), \quad t > 0 \text{ (liquid)} \quad (1)$$

$$T(X(t), t) = T_m, \quad t \geq 0 \quad (2a)$$

$$\rho L X'(t) = -k_L T_x(X(t), t), \quad t > 0 \quad (2b)$$

$$X(0) = 0, \quad \text{(material initially completely solid)} \quad (3)$$

$$T(0, t) = T_L > T_m, \quad t > 0 \quad (4)$$

The corresponding problem for a slab **freezing** from the left due to a temperature  $T_S < T_m$  being imposed at  $x = 0$  is formally obtained by replacing every subscript  $L$  by  $S$  and the latent heat  $L$  by  $-L$  in (2b).

### 2.1.B The Neumann Solution

We introduce the similarity variable

$$\xi = \frac{x}{\sqrt{t}}, \quad (5)$$

and seek the solution in the form

$$T(x, t) = F(\xi), \quad (6)$$

with  $F(\xi)$  an unknown function. Accordingly it is natural that we would seek the interface location  $X(t)$  to be proportional to  $\sqrt{t}$ , searching therefore for a constant  $A$  for which

$$X(t) = A\sqrt{t}. \quad (7)$$

Substituting into (1) and integrating we obtain

$$F(\xi) = B \int_0^{\xi} e^{-\frac{s^2}{4\alpha_L}} ds + C = B\sqrt{\pi\alpha_L} \operatorname{erf}\left(\frac{\xi}{2\sqrt{\alpha_L}}\right) + C \quad (8)$$

for  $B, C$  constants, where

$$\operatorname{erf}(z) = \frac{2}{\sqrt{\pi}} \int_0^z e^{-s^2} ds \quad (9)$$

denotes the **error function** [ABRAMOWITZ-STEGUN] (see §1.2, also (28-35) below). Conditions (4) and (2a) yield

$$C = T_L \text{ and } B = \frac{T_m - T_L}{\sqrt{\pi\alpha_L} \operatorname{erf}(A/2\sqrt{\alpha_L})} \quad (10)$$

Set

$$\lambda = \frac{A}{2\sqrt{\alpha_L}}, \quad \Delta T_L = T_L - T_m, \quad (11)$$

and

$$\mathbf{St}_L = \frac{c_L \Delta T_L}{L} = \mathbf{Stefan\ Number}. \quad (12)$$

Then the Stefan condition (2b) leads to an equation for  $\lambda$ :

$$\lambda e^{\lambda^2} \operatorname{erf}(\lambda) = \frac{k_L}{\rho L} \frac{\Delta T_L}{\sqrt{\pi\alpha_L}} = \frac{c_L \Delta T_L}{\sqrt{\pi} L} = \frac{\mathbf{St}_L}{\sqrt{\pi}}. \quad (13)$$

Hence it is more convenient to express the solution in terms of  $\lambda$ . From (5-7, 11),

$$X(t) = 2\lambda\sqrt{\alpha_L t}, \quad (14)$$

and from (5-8,10)

$$T(x, t) = T_L - \Delta T_L \frac{\operatorname{erf}\left(\frac{x}{2\sqrt{\alpha_L t}}\right)}{\operatorname{erf}(\lambda)}, \quad (15)$$

with  $\lambda$  a root of the transcendental equation

$$\lambda e^{\lambda^2} \operatorname{erf}(\lambda) = \mathbf{St}_L / \sqrt{\pi}. \quad (16)$$

It is easily shown (PROBLEM 2) that the quantity  $f(\lambda) = \lambda e^{\lambda^2} \operatorname{erf} \lambda$  is a strictly increasing function of  $\lambda \geq 0$ ,  $f(0) = 0$ ,  $\lim_{\lambda \rightarrow \infty} f(\lambda) = +\infty$ , and therefore the graph of  $y = f(\lambda)$  intersects any horizontal line  $y = \mathbf{St}_L / \sqrt{\pi}$  exactly once. In other words, for each value of  $\mathbf{St}_L > 0$ , there exists a **unique** root,  $\lambda$ , of equation (16), **Figure 2.1.3**. Once  $\lambda$  is found by solving the transcendental equation (16), the solution of the Stefan Problem is given by (14-15). This is the classical **Neumann solution** to the Stefan Problem (after F. Neumann).

Note that the uniqueness of the root  $\lambda$  implies the uniqueness of the *similarity* solution, i.e. that (14-15) is the only solution of the form (6-7). Is this the *only possible* solution of (1-4)? The answer is Yes. The Stefan problem is a well-posed mathematical problem (§1.2.C, §4.5), so it admits only one solution. Uniqueness of the solution follows from the much more general uniqueness of a weak solution presented in §4.4.

### 2.1.C Dimensionless form

We observe in (16) that the value of the root  $\lambda$  and hence also the solution, depends on a *single dimensionless parameter*, the **Stefan Number**, defined in (12). This is better brought out by undimensionalizing the problem itself. We introduce the dimensionless length and time variables,

$$\zeta = \frac{x}{\hat{x}}, \quad Fo = \frac{\alpha_L}{\hat{x}^2} t = \mathbf{Fourier\ Number}, \quad (17)$$

where  $\hat{x}$  is any convenient length scale (note that there is no “natural” length in this problem), and the dimensionless interface and temperature

$$\Sigma(Fo) = \frac{X(t)}{\hat{x}}, \quad u(\zeta, Fo) = \frac{T(x, t) - T_m}{\Delta T_L}, \quad (18)$$

where  $\Delta T_L = T_L - T_m$  as in (11). Then the Stefan Problem (1-4) takes the form (PROBLEM 6)

$$u_{Fo} = u_{\zeta\zeta}, \quad 0 < \zeta < \Sigma(Fo), \quad Fo > 0 \quad (19)$$

$$u(\Sigma(Fo), Fo) = 0, \quad Fo > 0 \quad (20)$$

$$\Sigma'(Fo) = -\mathbf{St}_L \cdot u_{\zeta}(\Sigma(Fo), Fo), \quad Fo > 0 \quad (21)$$

$$\Sigma(0) = 0 \quad (22)$$

$$u(0, Fo) = 1, \quad Fo > 0, \quad (23)$$

containing a *single parameter*, the Stefan number (12). For alternative dimensionless forms see §3.1.

The Neumann similarity solution of the dimensionless problem (19-23) is given by (PROBLEM 7)

$$\Sigma(Fo) = 2\lambda\sqrt{Fo}, \quad Fo \geq 0, \quad (24)$$

$$u(\zeta, Fo) = 1 - \frac{\operatorname{erf}\left(\frac{\zeta}{2\sqrt{Fo}}\right)}{\operatorname{erf} \lambda}, \quad 0 \leq \zeta \leq \Sigma(Fo), \quad Fo \geq 0, \quad (25)$$

with  $\lambda$  the root of the same transcendental equation

$$\lambda e^{\lambda^2} \operatorname{erf} \lambda = \frac{St_L}{\sqrt{\pi}}. \quad (26)$$

### 2.1.D The root $\lambda$ versus the Stefan Number

As the only parameter present in the problem (19-23), the Stefan number  $St_L$  completely characterizes the melting process. We may think of it as representing the ratio of the “sensible heat”,  $c_L \Delta T_L$  to the latent heat  $L$ . That this is indeed a correct interpretation will be shown in §2.2.G. Note that for a freezing process we define the Stefan number by

$$St_S = \frac{c_S(T_m - T_S)}{L}.$$

To gain perspective, let us compute  $St$  for some materials in typical phase-change processes.

**EXAMPLE 1: Ice and Water.** Ice and water are the solid and liquid phases of the same material ( $H_2O$ ). Under ordinary conditions the temperature of ice is less than the value  $T_m = 273.15 \text{ K}$  ( $0^\circ\text{C}$ ); upon warming, ice melts at this temperature with a latent heat  $L = 333.4 \text{ kJ/kg}$ , and water is found at temperatures above  $T_m$ . Its specific heat is  $c_L = 4.1868 \text{ kJ/kg K}$ . Due to the low value of the ratio  $c_L/L$ , the Stefan Number for melting of ice is typically no more than 1; e.g. with  $T_L = 37^\circ\text{C}$  (body temperature), we have  $St_L = 0.46$ .

In freezing of water, the specific heat of ice varies strongly with temperature (see (1) §1.2), typically in the range of  $1 \leq c_S \leq 2.09$ , which results in even smaller Stefan numbers. For example, in a food freezing process, we may have  $T_S = -20^\circ\text{C}$ ; taking  $c_S = 2$  as representative value, we find  $St_S = c_S(T_m - T_S)/L \approx 0.12$ .

**EXAMPLE 2: Copper.** For copper  $T_m = 1356.2 \text{ K}$  and  $L = 204.9 \text{ kJ/kg}$ . Suppose that copper, initially at the temperature  $1470 \text{ K}$ , cools down to  $T_m$  and solidifies; for liquid copper the average specific heat is  $c_L = .51 \text{ kJ/kg K}$ , hence we have  $St = .28$ . Suppose that the process includes cooling to room temperature; for this temperature range a representative value of the specific heat is  $c_S = .45 \text{ kJ/kg K}$ ; thus the temperature drop  $\Delta T$  in the Stefan number is approximately  $1200 \text{ K}$  and  $St = 2.64$ .

**EXAMPLE 3: Melting of a Paraffin Wax.** Paraffin waxes have high latent heat. A typical paraffin wax is N- Octadecane for which  $\bar{c} = 2.16$  kJ/kg K,  $L = 243$  kJ/kg and the melting temperature  $T_m = 301.2$  K. Over a range of temperature  $\Delta T = 100$  K,  $St = .89$ . Like water, paraffin waxes generally have low Stefan numbers associated with their melting and solidification.

**EXAMPLE 4: Melting of Silicon-Dioxide from Room Temperature.** Silica (silicon dioxide) is a material with a high specific heat. In fact, over a range of temperatures from room temperature to its melting point at  $T_m = 1996$  K the average specific heat is  $\bar{c} = 1.12$  kJ/kg K, while its latent heat is  $L = 158.3$  kJ/kg. Hence for a melting process from room temperature (298 K),  $St = 12$ .

These examples point to the following rule of thumb. For certain families of non-metallic solids such as waxes,  $St$  is small; hence, the bulk of heat stored or released from them is latent heat. For metals  $St$  is of the order 1-10 and so the effect of sensible heat is at least as large as that of latent heat. For other materials such as silicates  $St$  may be very large; the sensible heat will then dominate the heat transfer process. Of course  $St$  depends on the temperature drop  $\Delta T$  experienced by the material during the heat transfer process (PROBLEM 14).

In general, the size of  $St$  will determine the suitability of a particular method for analyzing a given heat transfer process. For large  $St$  the process will essentially be one of pure conduction to which a variety of existing techniques are applicable. For small  $St$  the conduction heat transfer process will be dominated by the phase change.

Given a melting or freezing process, hence a Stefan number  $St$ , the transcendental equation

$$\lambda e^{\lambda^2} \operatorname{erf} \lambda = St/\sqrt{\pi} \quad (26)$$

is easily solvable by the Newton-Raphson iterative method [PRESS et al] using as initial “guess” the value  $\sqrt{St/2}$ . The latter is the approximate solution to (26) when  $St \approx 0$ , as we shall show in §2.1.F. **Figure 2.1.3** displays the values of the root  $\lambda$  for each  $St$  in the range  $0 \leq St \leq 5$ , found by the Newton-Raphson method.

For the convenience of the reader and easy reference we list here the basic properties of the **error function** [ABRAMOWITZ-STEGUN]

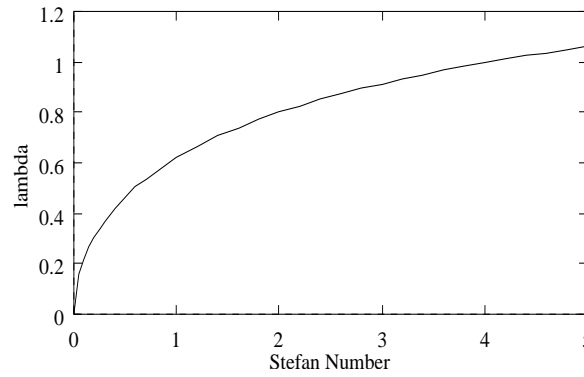
$$\operatorname{erf}(z) = \frac{2}{\sqrt{\pi}} \int_0^z e^{-s^2} ds \quad (27)$$

$$\operatorname{erf}(0) = 0, \quad \operatorname{erf}(\infty) = 1, \quad (28)$$

$$\operatorname{erf}(-z) = -\operatorname{erf}(z) \quad (29)$$

$$\frac{d}{dz} \operatorname{erf}(z) = \frac{2}{\sqrt{\pi}} e^{-z^2} > 0, \quad (30)$$

$$\operatorname{erf}(z) = \frac{2}{\sqrt{\pi}} \left( z - \frac{z^3}{3 \cdot 1!} + \frac{z^5}{5 \cdot 2!} - \frac{z^7}{7 \cdot 3!} + \dots \right), \quad (31)$$



**Figure 2.1.3.** The root  $\lambda$  of (26) vs the Stefan Number.

$$\operatorname{erf}(z) \approx 1 - \frac{e^{-z^2}}{z\sqrt{\pi}} \left(1 - \frac{1}{2z^2} + \dots\right) \quad \text{as } z \rightarrow \infty, \quad (32)$$

$$\text{complementary error function:} \quad \operatorname{erfc}(z) = 1 - \operatorname{erf}(z). \quad (33)$$

Extensive tables of values appear in [ABRAMOWITZ-STEGUN], but many Fortran libraries contain  $\operatorname{erf}(z)$ . A useful analytical approximation to the error function is given by the following relation:

$$\operatorname{erf} z = \begin{cases} 1.128z, & 0 \leq z \leq 0.15 \\ -0.0198 + z(1.2911 - 0.4262z), & 0.15 \leq z \leq 1.5 \\ 0.8814 + 0.0584z, & 1.5 \leq z \leq 2 \\ 1, & 2 \leq z \end{cases} \quad (34)$$

In the same spirit, an effective approximation to the root  $\lambda$  of (26) is given by the expression

$$\lambda \approx 0.706\sqrt{St} \{1 - 0.21(0.5642 \cdot St)^{0.93-0.15St}\}. \quad (35)$$

This relation has less than a 1% relative error for  $0 < St < 0.83$ , a relative error below 5% for  $0.83 < St < 4.28$  and below 10% for  $St < 4.86$ .

### 2.1.E Example: Melting a slab of ice

A slab of ice is 10 cm thick. It is initially solid and at its melt temperature of  $0^\circ\text{C}$ . One face of the slab is insulated while from the initial moment  $t = 0$  of our experiment, the other will be set at the warm temperature of  $25^\circ\text{C}$  and maintained at this value for all time. We have placed three thermocouples in the slab, at depths of 1 cm, 3 cm and 5 cm. We wish to know the time of melt of the portions up to each thermocouple location, as well as the melting time for the entire slab. We wish also to learn about the appearance of the time-temperature measurements



provided by the thermocouples, as well as the appearance of the temperature distribution as a function of position. The information that we seek is provided by the relations (14) (for the melt front), and (15) (for the temperature distribution). Before we hasten to compute, however, let us consider what we need to know and what we are ignoring in our idealized melting model.

Firstly, this problem is not just a “textbook” question, but one that appears in various forms in a variety of applications. Three analogous cases that come to mind are the thawing of food, the freezing or melting of the ground under a highway, and the freezing of ground around an earth-based heat exchanger for a heat pump. Even if the basic geometry of the process is not slab-like, the slab geometry may be a good approximation to it. Thus for a large portion of the melting process of a rectangular region, the corners do not affect the process very much and it may be considered as if uncoupled melting or freezing processes are taking place at each face. Similarly unless the pipe radius is very small the freezing or melting around a pipe is roughly speaking, slab-like.

The words “roughly speaking” as used above are meaningful. While one may strive for unlimited accuracy (and indeed, in the absence of that goal, a “rule of thumb approach” will be questionable), nevertheless heat transfer process simulation carries with it the burden of many sources of inaccuracy. These include the lack of accurate thermophysical parameter values [TOULOUKIAN], the simplifications needed to apply the tools of mathematics to the goal of simulation, and the simplifications needed to carry out experiments. The latter may arise, for example, from the changes of density of a material under a change of phase, etc. (see PROBLEMS 11-13). Besides, rough, first-cut approximations are informative, and, possibly, sufficient in some circumstances.

In our example we are ignoring the thermal effects of the change of density, which is reasonable for small temperature gradients and small volumes. For the only effect of a density change is to replace less dense ice by denser water, thus in effect “pulling” the material towards the heating face. This action would induce convection in the liquid region (which is negligible due to the smallness of the region involved), while the solid remains at the melt temperature for all time. The mechanical effect of this action would, of course, be to buckle the container (if it is tightly sealed) at the far end, (.1 m), an effect with which we are not concerned ! In any case, density change effects will be discussed in §2.3.

The assumption of the initial temperature being at the melting point is difficult to attain in practice but may be “nearly” reached. As we will see in §2.2, the estimate of the melt-depth that we will obtain will be greater than that obtained when the initial subcooling is indeed taken into account (see §2.2).

Since our process is only “one-phase”, we only need the relevant properties of water which are: melt temperature =  $T_m = 0^\circ C$ , density =  $\rho = 1 \text{ g/cm}^3$ , specific heat =  $c_L = 4.1868 \text{ J/g}^\circ C$ , conductivity =  $k_L = 0.564 \times 10^{-2} \text{ J/cm s}^\circ C$ , thermal diffusivity =  $\alpha_L = k_L / \rho c_L = 1.347 \times 10^{-3} \text{ cm}^2/\text{s}$ , latent heat =  $L = 333.4 \text{ J/g}$ . We then compute the Stefan number  $St$  and obtain the melt front history  $X(t)$  and the temperature distribution  $T(x, t)$  from (14-16).

The temperature drop for our process is  $\Delta T_L = T_L - T_m = 25^\circ\text{C}$ , and thus the Stefan number is  $St = c_L \Delta T_L / L = 0.314$ . Using the Newton-Raphson method of PROBLEM 9 we find the root  $\lambda$  of (16) to be  $\lambda = 0.3777$ . A much simpler method for solving the transcendental equation is to use relation (35), giving us the value  $\lambda = 0.3776$ . If you are really “in a hurry” to obtain a “back of the envelope” estimate, the value of  $\sqrt{St/2}$  is 0.3962 (see §2.1.F) with a relative error of 4.9%, which is well within the needs of a reasonable “sizing” estimate.

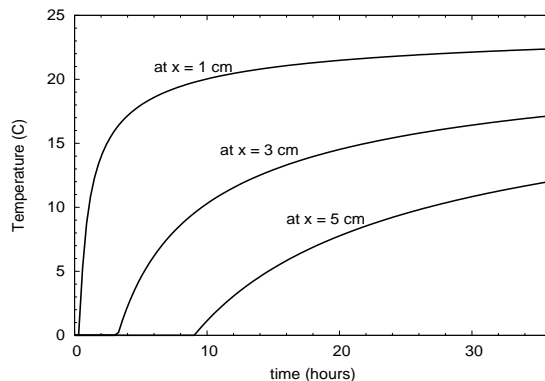
From (14), the time needed for the melting front to reach a given depth  $X$  is

$$t_{melt} = X^2 / (4 \lambda^2 \alpha_L) . \quad (36)$$

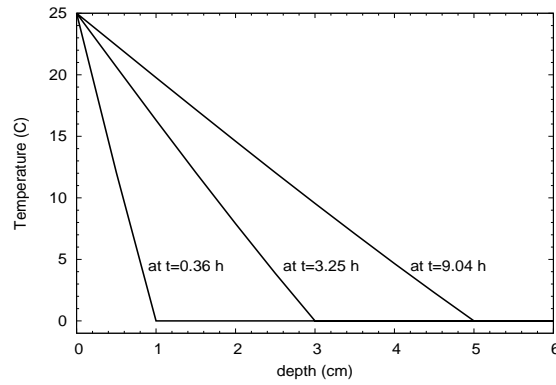
Let  $t_{melt}^1$ ,  $t_{melt}^2$ ,  $t_{melt}^3$  and  $t_{melt}^4$  be the times needed for the melt front  $X(t)$  to reach the thermocouples at depths  $X = 1, 3, 5$  centimeters, and the right hand face at 10 centimeters, respectively. Substitution into (36) yields

$$\begin{aligned} t_{melt}^1 &= 1301.44 \text{ sec} = 0.36 \text{ hr} \\ t_{melt}^2 &= 11713 \text{ sec} = 3.25 \text{ hr} \\ t_{melt}^3 &= 32536 \text{ sec} = 9.04 \text{ hr} \\ t_{melt}^4 &= 130144 \text{ sec} = 36.15 \text{ hr} \end{aligned}$$

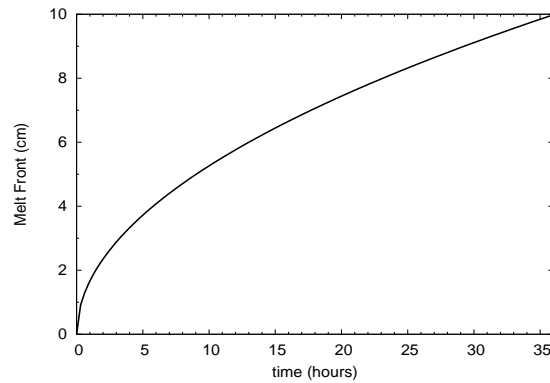
In **Figure 2.1.4** we see the simulated thermocouple readings at the three depths where they were assumed placed. Note that the curves are all convex downward, and heading asymptotically to the wall value of  $25^\circ\text{C}$ . **Figure 2.1.5** is interesting. It shows temperature distributions in the liquid at the times  $t_{melt}^1$ ,  $t_{melt}^2$  and  $t_{melt}^3$ , that to all intents and purposes are linear in the spatial variable. This is a particular case of the general “rule of thumb” that for small values of the Stefan number  $St$ , the temperature in the phase change process is at any time essentially at its steady state, (quasistationary, see (38) and §3.1) because of the quickness of the response of temperature relative to the movement of the phase change front. In **Figure 2.1.6** we see the moving front as a function of time.



**Figure 2.1.4.** Melting of ice: temperature histories at three depths.



**Figure 2.1.5.** Melting of ice: temperature profiles at three times.



**Figure 2.1.6.** Melting of ice: interface location.

### 2.1.F The case of small Stefan Number

For many materials of interest the specific heat is considerably smaller than the latent heat so that the Stefan number for processes with moderate  $\Delta T$  is of the order  $10^{-1}$  or less. Consider equation (26). For  $St \approx 0$ ,  $\lambda$  must also be small, and by (31)  $\lambda e^{\lambda^2} \operatorname{erf} \lambda \approx \lambda \cdot \frac{2}{\sqrt{\pi}} \lambda$ ; hence (26) is approximately  $\frac{2}{\sqrt{\pi}} \lambda^2 = \frac{St}{\sqrt{\pi}}$ , or

$$\lambda \approx \sqrt{\frac{St}{2}} \quad \text{for } St \approx 0. \quad (37)$$

It also follows that for  $0 \leq x \leq X(t) = 2\lambda\sqrt{\alpha_L t}$  the quantity  $\frac{x}{2\sqrt{\alpha t}} \leq \lambda \ll 1$ , whence, by (31),

$$\frac{\operatorname{erf}\left(\frac{x}{2\sqrt{\alpha_L t}}\right)}{\operatorname{erf} \lambda} \approx \frac{\frac{2}{\sqrt{\pi}} \frac{x}{2\sqrt{\alpha_L t}}}{\frac{2}{\sqrt{\pi}} \lambda} = \frac{x}{X(t)},$$

and the Neumann temperature (15) becomes

$$T(x, t) \approx T_L - \Delta T_L \frac{x}{X(t)}, \quad 0 \leq x \leq X(t), \quad t \geq 0. \quad (38)$$

For each  $t > 0$  this is linear in  $x$ , i.e. the temperature profile at each time is a straight line joining the point  $(x = 0, T = T_L)$  with  $(x = X(t), T = T_m)$ . This is the reason for the linear profile in **Figure 2.1.5**.

Note that (38) satisfies the steady-state equation  $T_{xx} = 0$ , while the Neumann temperature satisfies  $T_{xx} = \frac{1}{\alpha_L} T_t$ . It is an approximate solution to (1-4), valid when  $St_L \approx 0$  and it is called the *quasistationary approximation*, the subject of §3.1, 3.2.

## PROBLEMS

**PROBLEM 1.** (a) Formulate the 1-phase Stefan problem for a slab initially liquid at  $T_m$ , freezing from the left due to an imposed constant temperature  $T_S < T_m$  at  $x = 0$ .

(b) Verify that the freezing problem results formally by replacing every subscript  $L$  by  $S$  and  $L$  by  $-L$  in (1-4).

**PROBLEM 2.** Show that  $f(\lambda) = \lambda e^{\lambda^2} \operatorname{erf} \lambda$ ,  $\lambda > 0$ , is strictly increasing [ $f'(\lambda) > 0$  for any  $\lambda > 0$ ].

**PROBLEM 3.** Verify the Neumann solution, i.e. that (14-16) satisfy (1-4).

**PROBLEM 4.** For the case of freezing, in **PROBLEM 1**,

(a) Seek the similarity solution in the form:  $X(t) = 2\lambda\sqrt{\alpha_S t}$ ,  $T(x, t) = F(\xi)$ ,  $\xi = x/\sqrt{t}$ , and show that, with  $\lambda$  satisfying  $\lambda e^{\lambda^2} \operatorname{erf} \lambda = St_S/\sqrt{\pi}$ ,

$$T(x, t) = T_S + [T_m - T_S] \operatorname{erf}\left(\frac{x}{2\sqrt{\alpha_S t}}\right) / \operatorname{erf} \lambda, \quad 0 \leq x \leq X(t), \quad t \geq 0,$$

(b) Verify that the solution for freezing results formally from the solution for melting by the formal substitutions mentioned in **PROBLEM 1** (b). Note in particular, that the equation for  $\lambda$  is the same.

**PROBLEM 5.** Show that (5) is the only possible similarity variable for the heat equation (1) of the form  $\xi = x^\gamma t^\delta$ .

**PROBLEM 6.** Derive the dimensionless form (19-23) of the 1-phase Stefan Problem (1-4) for the variables (17-18).

**PROBLEM 7.** (a) Seek the similarity solution of (19-23) in the form

$$\Sigma(Fo) = 2\lambda\sqrt{Fo}, \quad u(\zeta, Fo) = F(\xi), \quad \xi = \frac{\zeta}{\sqrt{Fo}},$$

and show that this leads to (24-26).

(b) By direct change of variables, obtain the solution in physical variables (14-15) from the dimensionless solution (24-25).

**PROBLEM 8.** Repeat PROBLEMS 6,7 for the freezing case (see PROBLEMS 1,4).

**PROBLEM 9.** Write and implement a numerical scheme for solving (26) based on the Newton-Raphson method

$$\lambda_{n+1} = \lambda_n - \frac{f(\lambda_n)}{f'(\lambda_n)}, \quad \lambda_0 = \sqrt{St/2},$$

where  $f(\lambda) = \lambda e^{\lambda^2} \operatorname{erf} \lambda - \frac{St}{\sqrt{\pi}}$ , and produce a table of values of the root  $\lambda$  for  $0 < St < 5$ ,  $St = .01, .02, \dots$ .

**PROBLEM 10.** Freezing of water: Repeat the work of §2.1.E for the freezing of water initially at its melting point and subject to a face temperature of  $-25^\circ \text{C}$ . In this range, the properties of ice may be taken as:  $\rho_S = 0.91 \text{ g/cm}^3$ ,  $c_S \approx 2 \text{ J/g K}$ ,  $k_S \approx .023 \text{ J/cm s K}$ , hence  $\alpha_S = .0125 \text{ cm}^2/\text{s}$ . You may use the approximation (35) for the root of equation (26), and the approximation of (34) in the evaluation of the temperature function.

**PROBLEM 11.** A box has been constructed to house an experiment in melting and freezing of materials. The experiments are to be “one-dimensional”, in the sense that all but one of the box’s faces are insulated; the non-insulated face is Aluminum through which Copper tubes carrying a cooling/heating fluid pass. What problems can arise from the change of density of the material that takes place when it melts or freezes? How would you deal with these problems? What difficulties would arise in your modeling efforts as a result of your handling of these problems.

**PROBLEM 12.** In the course of doing the experiments of the last PROBLEM you encounter a material which in its liquid phase dissolves large amounts of air. What may happen to your experiment?

**PROBLEM 13.** In the course of performing a melting experiment and recording the temperature values read by a thermocouple held along a thin wire across the box of PROBLEM 11, you find that the temperature value “jumped” through a short temperature range discontinuously. The range begins at the melt temperature, the density of the solid is greater than that of the liquid, and the thermocouple and recording equipment are in order. What could have caused the jump?.