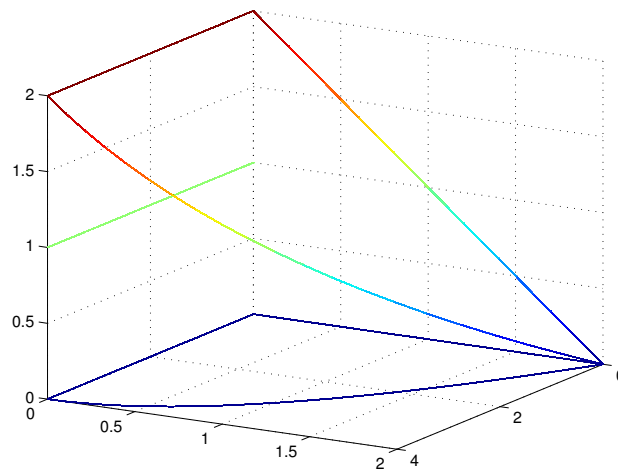


Answers to Even Exercises, Homework Set 9

Section 12.7 # 2 -8

# 26  $E = \{(x, y, z) | 0 \leq y \leq 2, 0 \leq z \leq 2 - y, 0 \leq x \leq r - y^2\}$



# 38 mass =  $1/24$ , center of mass =  $(1/5, 2/5, 1/5)$

Section 12.8 # 22  $\frac{8\sqrt{2}\pi}{3}$

# 26 Place the center of the base at  $(0, 0, 0)$ , then the density is  $\rho(x, y, z) = Kz$ , and the mass =  $\frac{\pi}{4}Ka^4$ , and the center of mass is  $(0, 0, \frac{8}{15}a)$